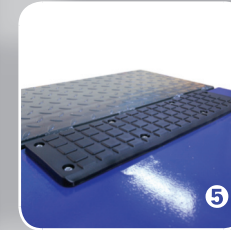
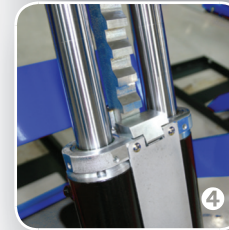
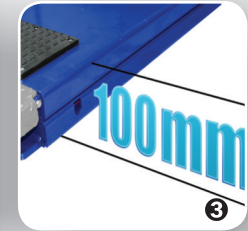
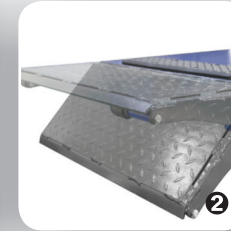
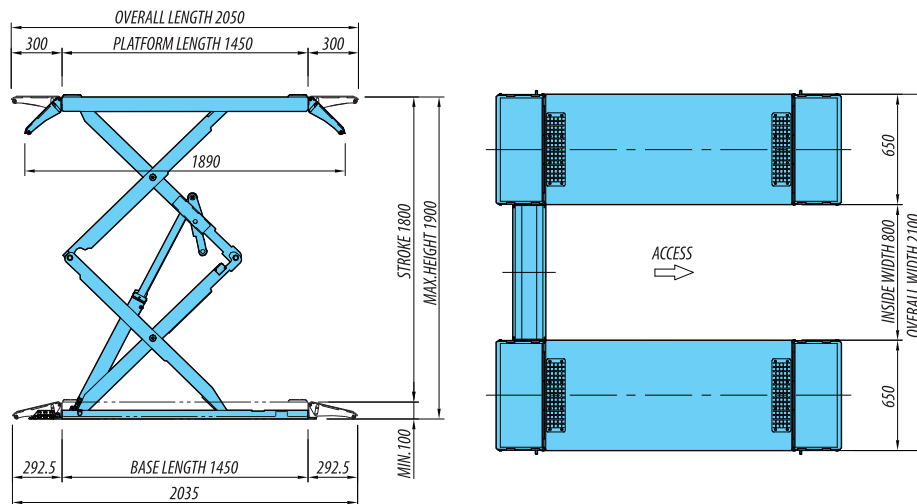


HL-35S

WHEELFREE 3.5TON DOUBLE SCISSOR LIFT



LAY-OUT



FEATURE

- High-Performed durable hydraulic cylinders composed by double pressure seals. ● Master & Slave cylinder synchronization system.
- Easy synchronization control system by special hydraulic valves.
- Extra low 100mm height profile. ● Descend alarm signal.
- Air cylinder operated locking device.
- Double function one touch ramp / extension platform.
- Rubber pads on the platform to protect the vehicle chassis.
- De-synchronization detecting electronic photo-cell.
- Hydraulic hand-pump for emergency ascend/descend.
- Two step descending system gives full foot protection.
- Van Adaptor kit. (OPTION)
- Pit frame for in-ground type. (OPTION)

SPECIFICATION

Model No.	HL-35S
Lifting Capacity (kg)	3,500 kg
Min/Max.Lifting Height (mm)	100 / 1,900 mm
Dimension (mm)	2,035(L) X 2,100(W) X 100(H)
Power Supply & Motor	3ph : 2HP, 4P, 380V, 50/60 Hz
Net Weight	920 kg